

A Community Guide to the Global Fund's Challenging Operating Environments Policy



Regional Platform
for Communication and Coordination
on HIV/AIDS, Tuberculosis and Malaria
For Anglophone Africa

WHAT IS THE CHALLENGING OPERATING ENVIRONMENTS (COE) POLICY ALL ABOUT?

The Challenging Operating Environments (COEs) Policy aims to provide a standard approach for the Global Fund in places where it can be difficult to work. The main aims of the policy are to promote creative ideas in difficult situations (innovation), increased flexibility in places that are going through difficult circumstances, and partnerships with local country actors.

WHAT EXACTLY ARE “CHALLENGING OPERATING ENVIRONMENTS?”

Challenging operating environments are countries or regions that are currently facing a number of complicated circumstances and situations which make it difficult to implement programming and measure impact. For example, a challenging operating environment could include a country with:

- Weak or unstable political situations (i.e. War or terrorism)
- Poor access to health services (i.e. Severe shortages of doctors and nurses)
- Man-made or natural crises and disasters (i.e. Earthquakes or floods)
- Outbreaks of other diseases (i.e. Ebola)

During emergencies like these, the scope of Global Fund investments may be more limited. This means that instead of a broad range of programs, the Global Fund might focus only on ensuring that there is continuity of treatment and essential services for people affected by the three diseases.



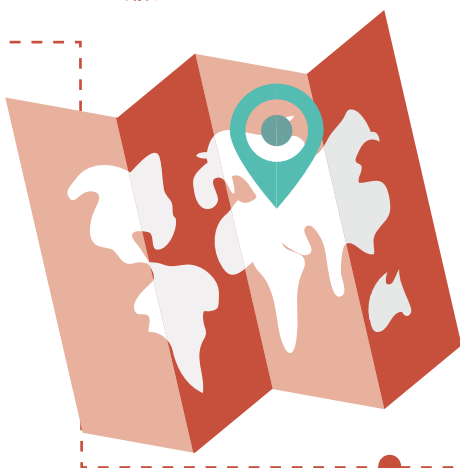
**THERE ARE 14*
AFRICAN COUNTRIES
CLASSIFIED AS
CHALLENGING
OPERATING**

*as of January 2016

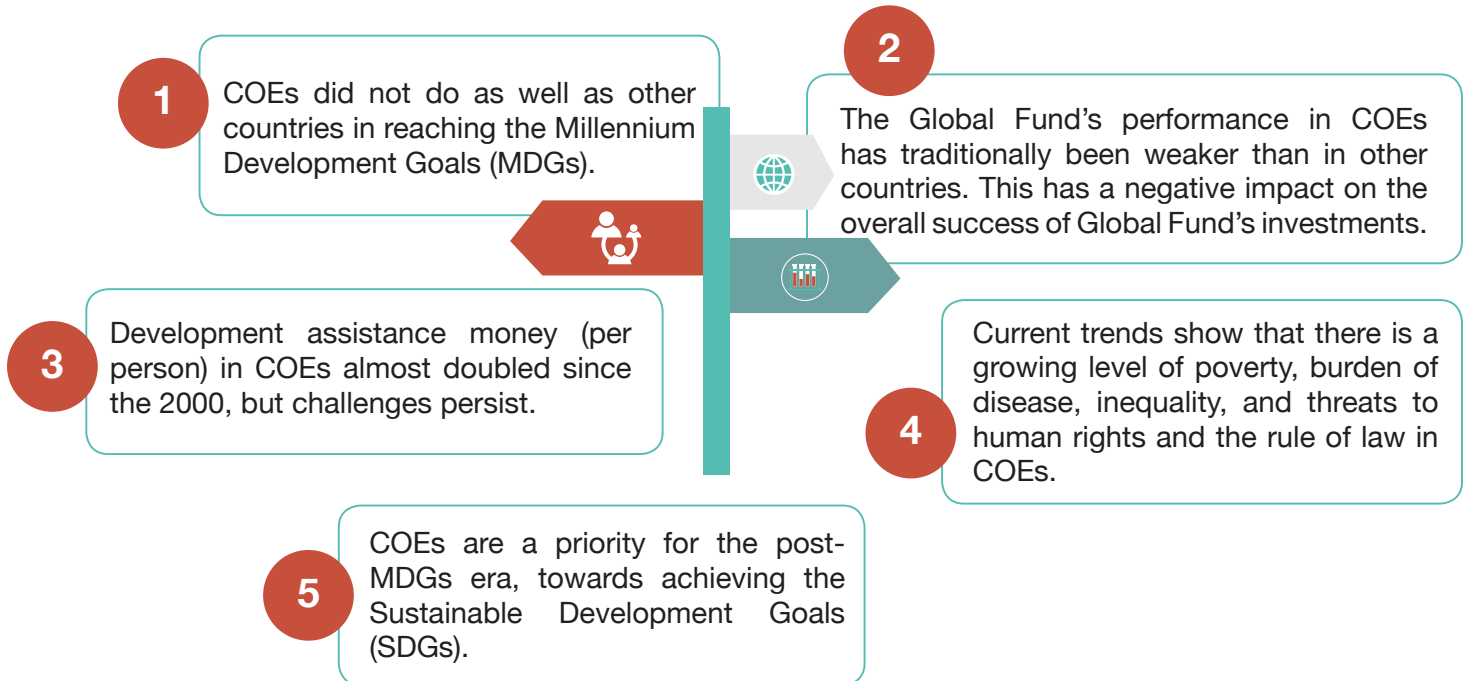
As of January 2016, the following countries are classified by the Global Fund as being challenging operating environments: Afghanistan, Burundi, Central African Republic, Chad, Congo (Democratic Republic), Eritrea, Guinea-Bissau, Haiti, Kenya, Iraq, Mali, Niger, Nigeria, Pakistan, Palestine, Somalia, South Sudan, Sudan, Syrian Arab Republic, and Yemen.

► *In these countries, the COE Policy will help the Global Fund to:*

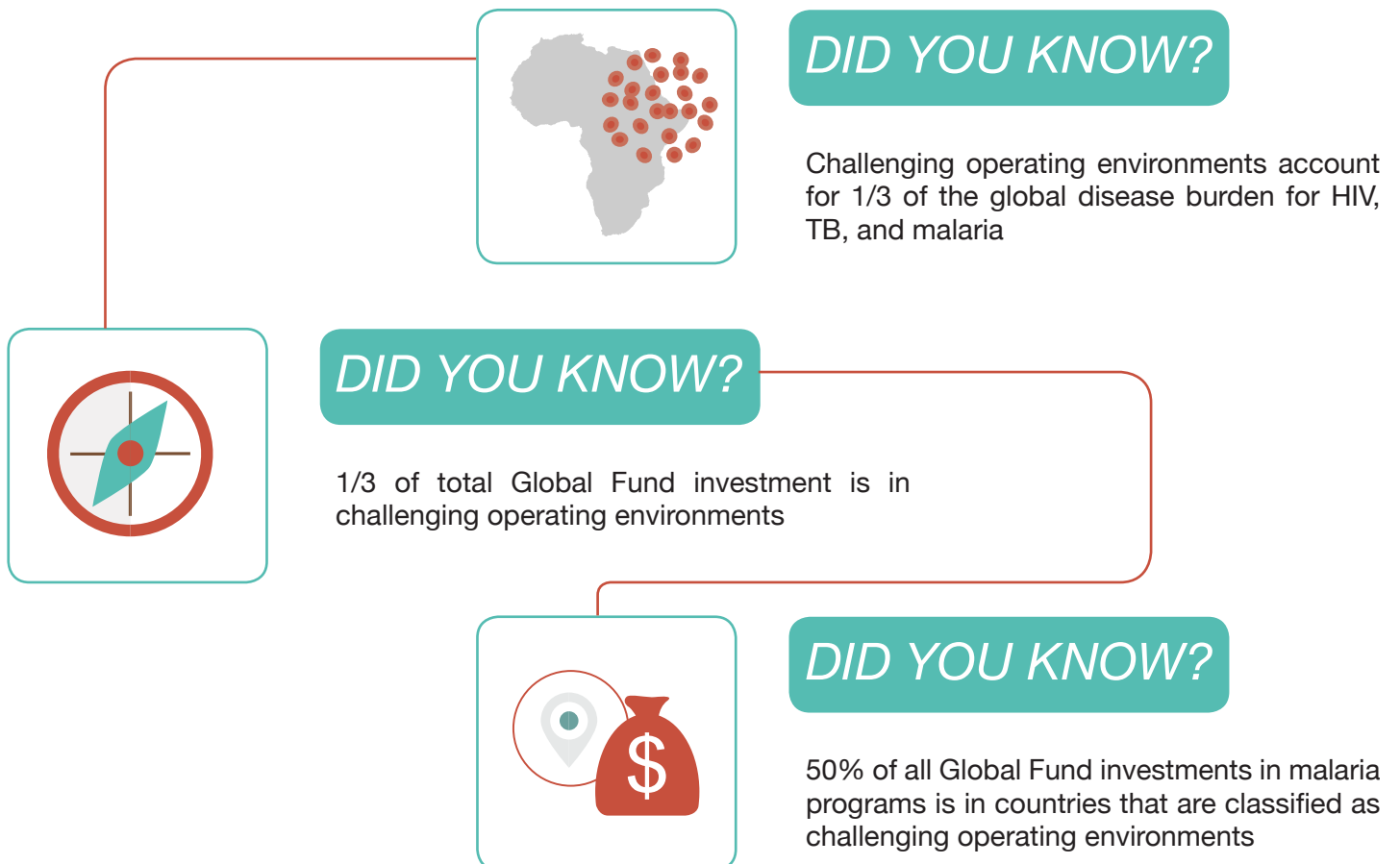
- Increase coverage of HIV, TB and malaria preventive and therapeutic services
- Reach key and vulnerable populations
- Build resilience through stronger community and health systems and to save lives
- Address gender-related and human rights barriers to services






WHY A FOCUS ON CHALLENGING OPERATING ENVIRONMENTS?



How important are Challenging Operating Environments for the Global Fund?



GUIDING PRINCIPLES OF THE GLOBAL FUND'S COE POLICY (AND WHAT THEY MEAN FOR US!)

	COE GUIDING PRINCIPLES	WHAT IT MEANS
	FLEXIBILITY	<ul style="list-style-type: none"> • Extending the length of grants • Accepting requests for funding outside of the CCM (<i>IMPORTANT FOR US!</i>). • Waiving some requirements during the application process. • Adjusting program targets, activities and budgets • Using third parties (other organizations) to manage the supply chain.
	PARTNERSHIPS	<ul style="list-style-type: none"> • Working with humanitarian organizations • Coordinating with U.N. and non-U.N. emergency organizations • Collaborating with organizations providing water and delivering health services. • Supporting civil society organizations and communities to implement programs (<i>IMPORTANT FOR US!</i>). • Greater involvement of private sector providers • Improving access to technical assistance by collaborating with academic institutions, technical partners, and civil society organizations with expertise in COEs (<i>IMPORTANT FOR US!</i>).
	INNOVATION	<ul style="list-style-type: none"> • Partnership arrangements • New or different ways of delivering services • Learn from local health actors, including civil society operating in COEs, especially those with expertise in maintaining health services in remote conflict-affected areas (<i>IMPORTANT FOR US!</i>).

WHAT IS THE ROLE OF EANNASO AND THE REGIONAL PLATFORM IN THE GLOBAL FUND'S COE POLICY?



- ✓ Ensure that the Global Fund has a coordinated approach across COEs.
- ✓ Document best practices and share learning experiences, monitor and report key risks, build partnerships at global level and facilitate partnerships at country level.
- ✓ Help civil society and community groups to engage in Global Fund processes by providing extra support to COEs.
- ✓ Prioritize linking civil society and community groups to technical assistance in COEs.

CONTACT THE REGIONAL PLATFORM

Regional Platform for Communication and Coordination for Anglophone Africa
 Hosted by EANNASO
 Arusha, Tanzania
 Tel: +255 737 210598
 Email: eannaso@eannaso.org | Website: www.eannaso.org
 Facebook: www.facebook.com/eannaso.org | Twitter: [@eannaso](https://twitter.com/eannaso)